

Temple Israel of Highlands County  
1305 Temple Israel Drive  
Sebring, Florida 33870  
863-382-7744 August 2022 / 5782



Temple Israel's Web Page [www.templeisraelofhcfi.org](http://www.templeisraelofhcfi.org)

Temple Israel is a Reform Temple that promotes the enduring and fundamental principles of Judaism.

Through prayer, study and friendship we strive to enrich our lives and ensure Jewish continuity in Highlands County.



## **Congregational Board**

### **Officers:**

#### **President:**

Julia Ruden

#### **Secretary:**

Mary Ann Romer

#### **Treasurer:**

Cathy Blumenthal

### **Trustees:**

Phyllis Behrens

Karen delValle

Lois Lewis Gill

Narola Rosenberg

Sara Rosenbaum

Alan Wildstein

### **Officiating Cantor:** **Cantor Riselle Bain**

Cell: 813-600-8013

\*American Conference of Cantors  
Clergy Committed to Judaism and  
Jewish Music

### **Rabbi Emerita:** **Lorraine Rudenberg**

### **Newsletter Staff:**

Michelle Herchick

# Cantor Riselle Bain's Message

August 2022/ 5782

As we roll into the month of August, we are also rolling into two months of the Hebrew calendar: the month of Av and the month of Elul. As the Hebrew month of Av begins, Jews become starkly aware that [Rosh Hashanah](#), the new Jewish year arrives in two months... and they're two months that will pass quickly. It is time to get ready.

The 11th month of the Jewish year (counting from Tishrei) is also referred to as "Menachem Av." "Menachem" means "consoler," and "Av" means "father." Due to the tragic events that occurred during this month, its name reminds us that God is there to comfort us in times of tragedy.

Tisha B'Av 2022 will begin on the evening of Saturday, August 6 and end on the evening of Sunday, August 7. On [Tisha B'Av](#), which is the Ninth day of the Hebrew month of Av, Jews commemorate the anniversary of the destruction of both the First Temple in 586 BCE by the Babylonians and the Second Temple in 70 CE by the Romans. In addition, many other catastrophic events in Jewish history – including the expulsion of the Jews from England in 1290, the expulsion of Jews from Spain in 1492, the beginning of World War I 1914, and the Treblinka death camp began operating and the start of deportations from the Warsaw Ghetto 1942 – fell on that date.

Some Jews commemorate Tisha B'Av by reading the biblical book of Lamentations, which places responsibility for our catastrophes squarely on our own shoulders. Its essential message is that we have a Covenant with God, who hopes and expects us to create a just caring and compassionate society, but we did not. Consumed by jealousy and baseless hatred for others, we neglected the poor and needy, failed to treat the elderly with dignity and respect, and spurned opportunities to make newcomers feel welcome in our midst.

If on objective examination the judgment feels unduly harsh, it remains—if we allow it to be—a powerful spur to our process of self-examination and change as we get ready for the New Year to arrive. The overriding message of Tishah B'Av for non-Orthodox Jews – who do not mourn the destruction of the Temple in Jerusalem and certainly do not pray for its rebuilding – is: "We can be better than we have been. The time is now to begin the effort to align our actions more closely with God's hopes and dreams for us."

The 15th of the Hebrew month of Av is known as one of the happiest days in Jewish history. Tu B'Av, a lesser-known holiday, will begin on the evening of Thursday, August 11, and end in the evening of Friday, August 12. Tu (Tet and Vav) in Hebrew equals the number 15. Tu B'av is all about love. It has basically become the "Jewish Valentine's Day" in Israel and some English-speaking countries. Before its modern interpretation, though, Tu B'av can be traced back to the grape harvest as a day of matchmaking. At some point, hundreds of years later, it was reinterpreted as a celebration of love.

Our August 12<sup>th</sup> service hits the happy holiday right on the bullseye! Tu B'Av, also signifies rebirth after destruction and is a day for new beginnings. On this day, the daughters of Jerusalem would borrow linen garments in order not to embarrass others who did not have beautiful clothing and dance in the vineyards to find prospective grooms. The Talmud considers this day the greatest festival of the year, followed by Yom Kippur, as its essence represents the future redemption.

Rosh Chodesh Elul (the beginning of the month of Elul) begins in the evening on Friday, August 26<sup>th</sup>, and ends in the evening on Sunday, August 28<sup>th</sup>. Summer will be coming to an end (sigh)... the High Holidays will be approaching! [Elul](#) is the last month of the Jewish calendar year.

Traditionally, Elul is meant to be used as a time for introspection and reflection. The point of Elul is to set the tone for the High Holy days, so it's all about taking personal stock of the past year and thinking about the year ahead. Leading up to Rosh Hashanah, Jews engage in cheshbon hanefesh ("an accounting of the soul"). The entire month is a 'preparatory period' to make repentance more meaningful, genuine and intentional.

The four letters that make up the Hebrew word "Elul" are believed to be an acronym for the famous phrase from [Song of Songs](#): 'Ani L'dodi V'dodi Li' – I am my beloved and my beloved in mine. Many have interpreted the "Beloved" in this phrase as God, and therefore, Elul is understood as a time to discover, restore, and recommit to a relationship with God. This is also the time to think about all the relationships in your life. Relationships with the divine, with loved ones, and with community. In Elul, "relationship is the key."

Looking forward to sharing the special months of Av and Elul with you at our services on August 12, September 9, and of course, we will begin the Hebrew month of Tishrei with our High Holy Day service for Rosh Hashanah on September 25!



# Message From the President

August 2022/5782

**Julia Ruden**

Dear Friends and Family;

A reminder that we have security for every service; please stop and give the password to our trusted armed security team. If you do not know the password, ask and if you invite someone to services tell them please.

I can't believe how fast this last year has flown by! It was exciting last service to have 3 generations of the Sand's family at Shul and thank you all for participating in lighting the candles and reading HafTarah and wine blessings... awesome family!

As we start to get ready for High Holy Days, please practice what Cantor Riselle gives you as an Honor; she will be calling you soon.

Thank you so much to all of you whom has paid your dues! If you have not made arrangements for dues, please contact Cathy Blumenthal our Treasurer or myself before the end of this month. There is a copy of the invoice attached to this newsletter also.

I hope everyone remains safe and enjoys their families and friends as much as we can,. Our gathering together is needed, and I am so looking forward to seeing everyone again,

**Continued prayers for all those who mourn or are sick!**

**May we continue to go from strength to strength!**

***Be thankful for everything, everyone, everyday – I am!***

***Thankxoxo you ALL for ALL you Dooooooo!!***

Love Julie

# Announcements



If you would like to sponsor an Oneg contact Karen del Valle 863-260-0325

## LUNCH BUNCH

The next Ladies Lunch Bunch Group will be 29 August at the Island View Restaurant at 12:30 PM, Sun N' Lake Blvd



Contact Renee Tepper  
863-414-8811 or  
[reneetepper@gmail.com](mailto:reneetepper@gmail.com)



**תודה רבה** - Thank You **Alan Wildstein** for your continued and generous support for Alan Jay Automotive for our transportation to and from Services! Please Contact Cantor Riselle Bain 813-600-8013 if you need assistance to get to services.

## Happy Anniversary

<b>Bruce &amp; Phyllis Behrens</b>	<b>08/17</b>
<b>David &amp; Evelyn Stahl</b>	<b>08/19</b>
<b>Elsa &amp; Marvin Kahn</b>	<b>08/22</b>
<b>Stanley &amp; Pamela Paralikis</b>	<b>08/24</b>
<b>Kathy &amp; Ben Kaleky</b>	<b>08/28</b>



**Mrs. Blumie's  
Porcelain Doll Studio**

207 N. Ridgewood Dr.  
Sebring, FL 33870

**863-402-9190**

BOARD CERTIFIED



LAKE PLACID EYE CLINIC  
GARY J. PEARCE, M.D.  
EYE PHYSICIAN & SURGEON

211 US 27 South  
Lake Placid, FL 33852  
(863) 465-1880

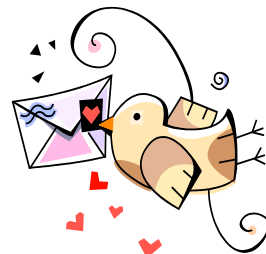
## AUGUST 2022 DONATION CARDS

*(All donations go to our Temple.)*

To send a birthday, anniversary, get well, sympathy or mazel tov card contact Mary Ann Romer at [matromer@aol.com](mailto:matromer@aol.com).

Write "Temple card" in the email subject box.

Send your minimum \$5.00 donation to Temple.



### Anniversaries

**By:** Congregation, Board of Directors & Trustees, Cantor Riselle Bain

**To:** Jay & Susie Luck, Bruce & Rabbi Lorraine Rudenberg, Stephanie & Marc Hauser



# In Loving Memory

## August Yahrzeits

\*\* Memorial Plaque in our Shul



Jennie Elias	Diana Frank**	Arya Mayer Frankel**
Ira Meyer Franbkel**	Nathan Garshick	Maud Harriet**
Hattie Jankower**	Murray Jay	Annette Kahn**
Jacob Kaminer	Ruth Siloinsky Kirshner**	Gustav Levy**
Selma Levy**	Neil T. Lewis**	William Mazen
Frances Liebeck	Joseph Lippman	Harry Pearlman
Sally Rotman	Joseph Schwartz	Annie Sherman**
Jane Sherwood	Esther Sibulkin**	Abraham Silverman

### Yahrzeit Donations

#### Given by

Mary Ann Romer  
Lois Lewis  
Bruce Kirshner

#### In Memory Of

Joseph Lippman  
Neil T. Lewis and John Gill  
Ruth Silinsky Kirshner

To plant a tree, email your information of who you're honoring/remembering to [jruden@embarqmail.com](mailto:jruden@embarqmail.com). Mail check (\$18.00/tree) to the temple. Write "Tree" in the memo line

Rolph and Narola Rosenberg planted a tree in Honor of Louie Rosenberg's 84th birthday.



Stephenson-Nelson Funeral Home  
& Crematory



Craig M. Nelson  
Licensed Funeral Director

**Don Elwell**

DIRECTOR OF MARKETING  
& PUBLIC RELATIONS  
401 U.S. Hwy 27 S. Sebring, FL 33870  
Email: [don.elwell@ALANJAY.COM](mailto:don.elwell@ALANJAY.COM)  
Phone (863) 314-5334

**ALAN JAY**  
Automotive Network

Board of County Commissioners  
COMMISSIONER, DISTRICT 2  
600 S. Commerce Ave. Sebring, FL 33870  
Email: [delwell@hcbcc.net](mailto:delwell@hcbcc.net) Phone: (863) 402-6835  
Cell: (863) 381 - 5622



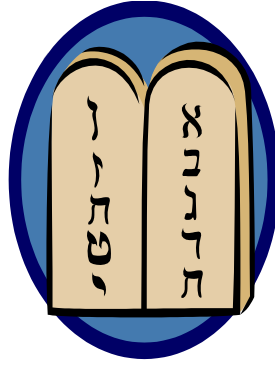
**Monarch Waystation Garden  
Lovingly Planted by Donna Wasson**





2022 / 5782

# Cantor Bain's Schedule:



Services will be at the Shul.

Here is the link to access the live services or the saved videos of our past services since we closed our doors due to the pandemic.

<https://www.facebook.com/662042600572611/live/>

## The following is our schedule of services Fridays at 6:30:

Friday 8/12 – Torah Vaetchanan

Friday 9/9 – Torah Ki Teitzei

Sunday - Monday – 9/25-26 Rosh Hashanah

Tuesday – Wednesday – 10/4-5 Yom Kippur

Friday 10/21 – Sukkot/Simchat Torah/ B'reishit

Friday 11/4 – Torah Lech L'cha – observe Kristallnacht actual date 11/9

Friday 11/18 – Torah Chayei Sarah

Friday 12/2 – Torah Vayetzei

Friday 12/23 – Chanukah



**TEMPLE ISRAEL**  
**OF**  
**HIGHLANDS COUNTY**  
1305 Temple Israel Drive  
SEBRING, FL 33870  
863-382-7744  
[www.templeisraelofhcf.org](http://www.templeisraelofhcf.org)

**INVOICE**

**ANNUAL DUES**

June 1, 2022 - May 31, 2023

**NAME:**

**DUES** \$ \_\_\_\_\_

**\*DUES ENHANCEMENT** \$ \_\_\_\_\_

**WOMAN'S CLUB DUES** \$ \_\_\_\_\_  
(\$15.00)

**NEW YEAR'S GREETINGS** \$ \_\_\_\_\_  
(\$18.00) 09/2021

**SECURITY DONATIONS** \$ \_\_\_\_\_

**TOTAL** \$ \_\_\_\_\_

**MEMBERSHIP CATEGORIES**

**FAMILY:** \$525.00  
**SINGLE:** \$325.00

Please make check payable to Temple Israel of Highlands County, FL  
Dues payable upon receipt of This invoice.

\*If you are able to increase your dues, it would be greatly appreciated!!

**NOTE: Special arrangements must be made with the President and/or Treasurer prior to the end of the first quarter or by September 1, 2022.**