

Temple Israel of Highlands County
1305 Temple Israel Drive
Sebring, Florida 33870
863-382-7744 JULY 2021 / 5781



Temple Israel's Web Page www.templeisraelofhcfcl.org

Temple Israel is a Reform Temple that promotes the enduring and fundamental principles of Judaism.

Through prayer, study and friendship we strive to enrich our lives and ensure Jewish continuity in Highlands County.



Congregational Board

Officers:

President:

Julia Ruden

Vice President:

Howard Salles

Secretary:

Mary Ann Romer

Treasurer:

Cathy Blumenthal

Trustees:

Phyllis Behrens

Karen delValle

Lois Lewis Gill

Narola Rosenberg

Sara Rosenbaum

Alan Wildstein

Officiating Cantor: **Cantor Riselle Bain**

Cell: 813-600-8013

*American Conference of Cantors
Clergy Committed to Judaism and
Jewish Music

Rabbi Emerita: **Lorraine Rudenberg**

Newsletter Staff:

Michelle Herchick

Bulletin Board:

Howard Salles

Looking Back and Looking Forward

One more Shabbat Service on July 9th from my dining room, and then we will be back in our Temple Israel Sanctuary! I know we are all so anxious to see each other, hug each other, pray in person with each other, and sing with each other. How I have missed hearing all the wonderful sounds we make together! Each time I have done a service on Facebook Live, I have imagined hearing you join me as we do in temple.

So, as I look back, I realize we had to think completely out of the box. Although we always met in person for Shabbat in our beautiful little synagogue and we never had any connection through internet for our services, we found a way to continue through our Facebook Live Shabbat services. We discovered that as much as we missed each other, because we opened our Shabbat service to the public, many others were drawn to join us on Facebook. We used to kid each other that we prayed for a minyan in Sebring; on Facebook we have attracted between 100 and over 400 people to join us as we made our journey through Bamidbar – the desert of Covid19. Friends and family have been able to join us. People looking for a spiritual uplift have found us all the way from Spain, Israel, the United Kingdom, even Kenya!

In these strange times, we still have found connection. Although quarantine meant that people and places would be limited, our spiritual practices offered us peace in the midst of unrest. The biblical ideas of peace and self-care seemed to be a common language for all of us.

Being grateful can be hard in times of stress and uncertainty. But I still believe we have so much for which to be grateful: We made it through! Temple Israel has received three grants from the Jewish Federation of Sarasota/Manatee that has helped us to be there for our congregation during these challenging times. Our beautiful Butterfly Garden will greet us as we return to our beloved Sanctuary on August 6th.

As we begin this new part of our journey together, we now will have our services at Temple, and they will also still be available on Facebook Live. Some of our members cannot drive anymore, and they live too far to send the transportation van so generously offered to us from Alan Wildstein. Some of our congregants live in other states, but still want to celebrate Shabbat and holidays with Temple Israel. Our thinking out of the box has led us to a new reality.

I want to thank you all for staying with me for all these months. I can hardly wait to see you, one more time on Facebook Live July 9th and then at Temple Israel beginning August 6th.

Cantor Riselle Bain



Message From the President

JULY 2021/5781

Julia Ruden

Dear Friends and Family;

We are re-opening our Temple building Friday, August 6th for services at 6:30 PM. Everybody is required to be vaccinated so we do not have to wear masks inside the shul. We will continue with Facebook live services if you are not vaccinated with hopes you will join us on Cantor Riselle's Facebook live page. We now have internet to be able to continue Facebook Live services.

Thank you to everybody who has sent in their annual dues. \$325 single \$525 Family.

Thank you to the Sarasota Manatee Jewish Federation for their continued support!

Please stay safe and keep everyone in prayer for continued safety and healing for those who need recovery.

Looking forward to seeing you soon!

Be thankful for everything, everyone, everyday – I am!

Thankxoxo you ALL for ALL you Dooooooo!!

Love,
Julie



Announcements

JULY 2021/ 5781



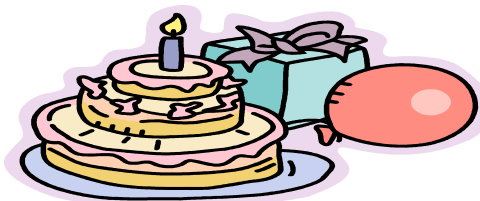
LUNCH BUNCH

The next Ladies Lunch Bunch Group is still on hiatus



Contact Renee Tepper
863-414-8811

תודה רבה - Thank You
Alan Wildstein for your continued and generous support for Alan Jay Automotive for our transportation to and from Services! Please Contact Cantor Riselle Bain 813-600-8013 if you need assistance to get to services.



Happy Anniversary

Jay & Susie Luck	07/04
Bruce & Rabbi Lorraine Rudenberg	07/20
Stephanie & Marc Hauser	07/24



**Mrs. Blumie's
Porcelain Doll Studio**

207 N. Ridgewood Dr.
Sebring, FL 33870

863-402-9190

BOARD CERTIFIED



LAKE PLACID EYE CLINIC
GARY J. PEARCE, M.D.
EYE PHYSICIAN & SURGEON

211 US 27 South
Lake Placid, FL 33852
(863) 465-1880



July Yahrzeits

*** Memorial Plaque in our Shul*

David Bellin	Sylvia Jay	Sarah Roth
Elliott D. Blumenthal**	Dr. Leon Kahn**	Betty Rosenbaum
Maurice Max Blumenthal**	Lillian Kamen**	Sarah Roth
Rose Cantor	Evelyn Ladinsky	Joan Rotman
George Dudley	Robert Liebeck	H. Pat Sibulkin**
Faith Faulds**	Sylvia Meltzer	Meyer Siegel
Bertram J. Frankel**	Frances Miller**	Rose Liemer Snoll
Lewis S. Glick**	Cyril Pearl	Solomon Snoll
Rose Goldberg	Ida Romer**	Lora Starr
Rita L. Wallbank**		Eva Wexler

Yahrzeit Donations

Given by

Judy Albin
Julia Ruden
Mary Ann Romer
Howard Salles

In Memory Of

Louis A. Frank, George Albin
Arnold Neumann, Selma R. Neumann
Judith Abrams, Theodore Romer
Solomon Salles, Rhoda Salles

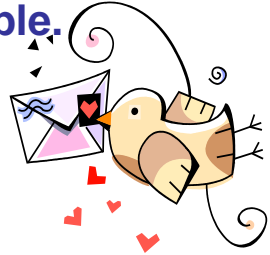
JULY 2021 DONATION CARDS

(All donations go to our Temple.)

To send a birthday, anniversary, get well, sympathy or mazel tov card contact Mary Ann Romer at matromer@aol.com.

Write "Temple card" in the email subject box.

Send your minimum \$5.00 donation to Temple.



Anniversaries

By: Congregation, Julie Ruden, Howard Salles, Cathy Blumenthal, Cantor Riselle Bain

To: Bruce Sherwood & Sara Rosenbaum

By: Congregation, Julie Ruden, Howard Salles, Cathy Blumenthal

To: Cantor Riselle Bain & Michael Duncan

By: Congregation, Julie Ruden, Cathy Blumenthal,

To: Millie & Bill Anderson, Nancy & Joe Rockhill, Dr. Lee & Denise Weisberger

A tree has been planted in Israel in loving memory of Warren Myron Frankel, beloved husband of Cathy Frankel by Herb Moscowitz and Susan and David Hutchinson

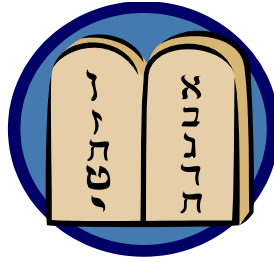


Celebrate any occasion while benefitting Israel and our temple. For only \$18.00, plant a tree in *Eretz Yisrael*.

Simply e-mail the donor and recipient information to:
jruden18@gmailmail.com

Mail your check to the temple, payable to Temple Israel.

Cantor Bain's Schedule:



Future Erev Shabbat Services

6:30 PM (subject to change)

Your health and safety is of the utmost concern to us. With the situation engendered by the current public health emergency around the country and the world, we want to protect everyone.

Here is the link to access the Facebook live services or the saved videos of our past services since we closed our doors due to the pandemic.

<https://www.facebook.com/662042600572611/live/>

Please follow the CDC guidance. If you are not fully vaccinated, masks should be worn in addition to staying at least 6 feet apart.

Please read the full guidance at: <https://www.cdc.gov/coronavirus/2019-ncov/prevent-getting-sick/prevention.html>

Friday, July 9 – Torah Portion Matot Masei – Facebook only

Friday, August 6 – Torah Portion Re'eh – both at the Synagogue and on Facebook



**TEMPLE ISRAEL
OF
HIGHLANDS COUNTY**

1305 Temple Israel Drive
SEBRING, FL 33870
863-382-7744

www.templeisraelofhcf.org

INVOICE

ANNUAL DUES

June 1, 2021 - May 31, 2022

NAME:

DUES \$ _____

***DUES ENHANCEMENT** \$ _____

WOMAN'S CLUB DUES \$ _____
(\$15.00)

NEW YEAR'S GREETINGS \$ _____
(\$18.00) 09/2021

SECURITY DONATIONS \$ _____

TOTAL \$ _____

MEMBERSHIP CATEGORIES

FAMILY: \$525.00
SINGLE: \$325.00

Please make check payable to Temple Israel of Highlands County, FL
Dues payable upon receipt of This invoice.

*If you are able to increase your dues, it would be greatly appreciated!!

NOTE: Special arrangements must be made with the President and/or Treasurer prior to the end of the first quarter or by September 1, 2021.