

Temple Israel of Highlands County  
Sebring, Florida  
863-382-7744

*JUNE 2021 / 5781*



Temple Israel's Web Page [www.templeisraelofhcf.org](http://www.templeisraelofhcf.org)

Temple Israel is a Reform Temple that promotes the enduring and fundamental principles of Judaism.

Through prayer, study and friendship we strive to enrich our lives and ensure Jewish continuity in Highlands County.



## **Congregational Board**

### **Officers:**

#### **President:**

Julia Ruden

#### **Vice President:**

Howard Salles

#### **Secretary:**

Mary Ann Romer

#### **Treasurer:**

Cathy Blumenthal

### **Trustees:**

Phyllis Behrens

Karen delValle

Lois Lewis Gill

Narola Rosenberg

Sara Rosenbaum

Alan Wildstein

### **Officiating Cantor:**

**Cantor Riselle Bain**

Cell: 813-600-8013

\*American Conference of Cantors  
Clergy Committed to Judaism and  
Jewish Music

### **Rabbi Emerita:**

**Lorraine Rudenberg**

### **Newsletter Staff:**

Michelle Herchick

### **Bulletin Board:**

Howard Salles

The synagogue, in [Judaism](#), is a [community](#) house of [worship](#) that serves as a place not only for liturgical services but also for assembly and study. Its traditional functions are reflected in three [Hebrew](#) synonyms for *synagogue*: *bet ha-tefilla* (“house of prayer”), *bet ha-kneset* (“house of assembly”), and *bet ha-midrash* (“house of study”). The term *synagogue* is of Greek origin (*synagein*, “to bring together”) and means “a place of assembly.”

The [Yiddish](#) word *shul* (from German *Schule*, “school”) is also used to refer to the synagogue, and in modern times the word *temple* is common among some [Reform](#) and [Conservative](#) congregations.

Temple Israel is our “house of prayer,” our “house of assembly,” and our “house of study.” It is our spiritual home. In a sense – as the ancient Israelites were uprooted from their homeland – for one year and four months, our congregation has been in galut, in exile from Temple Israel -- our “house of prayer,” our “house of assembly,” and our “house of study.”

As Jews, we never give up and we always have “Tikvah” – hope. We kept our sense of assembly, our prayers, and our study of Torah alive with our services on Facebook Live. We sang and read together and even chatted with each other through the chat box.

Thank God, it is time to make Aliyah back to our beloved Temple Israel! On August 6<sup>th</sup>, Temple Israel's doors will be open to all those who are protected after receiving the COVID vaccinations. For those who have not received the vaccinations, we will continue to also make our Shabbat services available through Facebook.

*Cantor Riselle Bain*

On Sunday, May 30<sup>th</sup>, Julie and Karen DelValle came to pick up our beautiful Holocaust Torah and bring her back to her home at Temple Israel. She has been in galut with me at my home all these months. I know she is happy to be back in the ark, standing next to her old friend, the Torah purchased by the Kahn family for Temple Israel. The two Torahs are probably sharing memories with each other.

As Debbie Friedman wrote in her song *Holy Place*, with text based on Exodus 25:8

*These are the prayers that we bring that we may make a holy place*

*This is the spirit that we bring that we may build a holy place*

*We will bring all the goodness that comes from our hearts*

*And the spirit of God and love will dwell within.*

*Cantor Riselle Bain*



# Message From the President

JUNE 2021/5781

**Julia Ruden**

Dear Friends and Family;

As we begin another fiscal year, I'm so thankful for somewhat "normal" to be back! We are so lucky to have Facebook & internet technology to have our services online with Cantor Riselle and we will continue to do so as we plan to open our Temple doors for August 6<sup>th</sup> service.

We welcome Mary Ann Romer as our new Secretary and of course we give thanks to our Board Members that remain year after year. All of you amaze me with your continued efforts in the successful running of our Temple. For those of you who work anonymously and endlessly - thank you Soooo MUCH!!

Another year begins and dues are due. Please mail your checks to the Temple if you have not done so already.

I hope everyone remains safe and enjoys their families and friends responsibly over the summer.

Prayers for all those who mourn or are sick!

May we continue to go from strength to strength!

***Be thankful for everything, everyone, everyday – I am!***

***Thankxoxo you ALL for ALL you Dooooooooo!!***

Love,  
Julie



# Announcements

JUNE 2021/ 5781

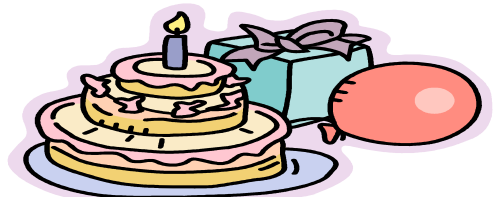


## LUNCH BUNCH

The next Ladies Lunch Bunch Group is still on hiatus



**תודה רבה - Thank You Alan Wildstein** for your continued and generous support for Alan Jay Automotive for our transportation to and from Services! Please Contact Cantor Riselle Bain 813-600-8013 if you need assistance to get to services.



## Happy Anniversary

<b>Bruce Sherwood &amp; Sara Rosenbaum</b>	<b>06/19</b>
<b>Cantor Riselle Bain &amp; Michael Duncan</b>	<b>06/24</b>
<b>Millie &amp; Bill Anderson</b>	<b>06/25</b>
<b>Nancy &amp; Joe Rockhill</b>	<b>06/25</b>
<b>Denise &amp; Lee Weisberger</b>	<b>06/30</b>



**Mrs. Blumie's Porcelain Doll Studio**

207 N. Ridgewood Dr.  
Sebring, FL 33870

**863-402-9190**

BOARD CERTIFIED



**LAKE PLACID EYE CLINIC**  
GARY J. PEARCE, M.D.  
EYE PHYSICIAN & SURGEON

211 US 27 South  
Lake Placid, FL 33852  
(863) 465-1880

# June Yahrzeits

\*\* Memorial Plaque in our Shul



Bonnie Ann Goergen	Judith Abrams
Seymour Fields-Elias	Martin Elias
George Albin**	Leon Novich**
Sadie Bellin	Theodore Romer**
Patricia G. Berzark**	Elizabeth A. Rosen**
Helen C. Dallas	Fannie Rosen**
Rose Frankel	Betty Rosenbaum
Louis A. Frank	Sarah Roth
Joseph Sewelson	Fanny Erskine
Sydney Kaphan	Robert Siegel
Walter Kessler	Dorothy Silverman
Abe Kirtz**	Lora Starr
Adele Kaman	Matthew L. Steward**
William Mazen	Mildred Wasoff
Arnold Neumann	
	Edward Laveen
Selma R. Neumann	Dora Wolkove**

## Yahrzeit Donations

### Given by

Judy Albin  
Julia Ruden  
Mary Ann Romer  
Howard Salles

### In Memory Of

Louis A. Frank, George Albin  
Arnold Neumann, Selma R. Neumann  
Judith Abrams, Theodore Romer  
Solomon Salles, Rhoda Salles

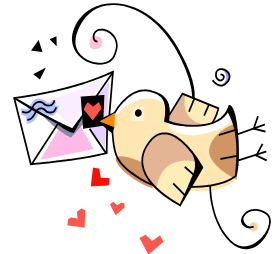
## JUNE 2021 DONATION CARDS

*(All donations go to our Temple.)*

**To send a birthday, anniversary, get well, sympathy or mazel tov card contact Mary Ann Romer.**

**Write "Temple card" in the email subject box.**

**Send your minimum \$5.00 donation to Temple.**



### Anniversaries

**By:** Congregation, Julie Ruden, Howard Salles, Cathy Blumenthal, Cantor Riselle Bain

**To:** Herb & Kathleen Weiss, Robert & Roberta Goodman

### Get Well

**By:** Congregation, Julie Ruden, Howard Salles, Cathy Blumenthal, Cantor Riselle Bain

**To:** Marvin Kahn, Narola Rosenberg, Phyllis Behrens, Thea Rubenstein, Rebecca Clarke, Aleczander Rosenberg, Mara Eisenberg, Lois Lewis, Alma Lloyd, Rabbi Fred Natkin

**By:** Congregation, Julie Ruden, Cathy Blumenthal, Cantor Riselle Bain

**To:** Howard Salles

A tree has been planted in Israel in loving memory of Warren Myron Frankel, beloved husband of Cathy Frankel by Herb Moscowitz and Susan and David Hutchinson.



Celebrate any occasion while benefitting Israel and our temple. For only \$18.00, plant a tree in *Eretz Yisrael*. Simply e-mail the donor and recipient information to Julie Ruden.

Mail your check to the temple, payable to Temple Israel.



**TEMPLE ISRAEL  
OF  
HIGHLANDS COUNTY**

863-382-7744

[www.templeisraelofhcf.org](http://www.templeisraelofhcf.org)

**INVOICE**

**ANNUAL DUES**

June 1, 2021 - May 31, 2022

**NAME:**

**DUES** \$ \_\_\_\_\_

**\*DUES ENHANCEMENT** \$ \_\_\_\_\_

**WOMAN'S CLUB DUES** \$ \_\_\_\_\_  
(\$15.00)

**NEW YEAR'S  
GREETINGS** \$ \_\_\_\_\_  
(\$18.00) 09/2021

**SECURITY DONATIONS** \$ \_\_\_\_\_

**TOTAL** \$ \_\_\_\_\_

**MEMBERSHIP CATEGORIES**

**FAMILY:** \$525.00

**SINGLE:** \$325.00

Please make check payable to  
Temple Israel of Highlands County, FL  
Dues payable upon receipt of  
This invoice.

\*If you are able to increase your dues, it  
would be greatly appreciated!!

**NOTE: Special arrangements must be made with the President and/or Treasurer prior to the end of the first quarter or by September 1, 2021.**



# Cantor Bain's Schedule:



## Future Erev Shabbat Services

6:30 PM (subject to change)

Your health and safety is of the utmost concern to us. With the situation engendered by the current public health emergency around the country and the world, we want to protect everyone.

Here is the link to access the Facebook live services or the saved videos of our past services since we closed our doors due to the pandemic.

<https://www.facebook.com/662042600572611/live/>

Please follow the CDC guidance. If you are not fully vaccinated, masks should be worn in addition to staying at least 6 feet apart.

Please read the full guidance at: <https://www.cdc.gov/coronavirus/2019-ncov/prevent-getting-sick/prevention.html>

Friday, June 11 – Torah Portion Korah – Facebook only

Friday, July 9 – Torah Portion Matot Masei – Facebook only

Friday, August 6 – Torah Portion Re'eh – both at the Synagogue and on Facebook